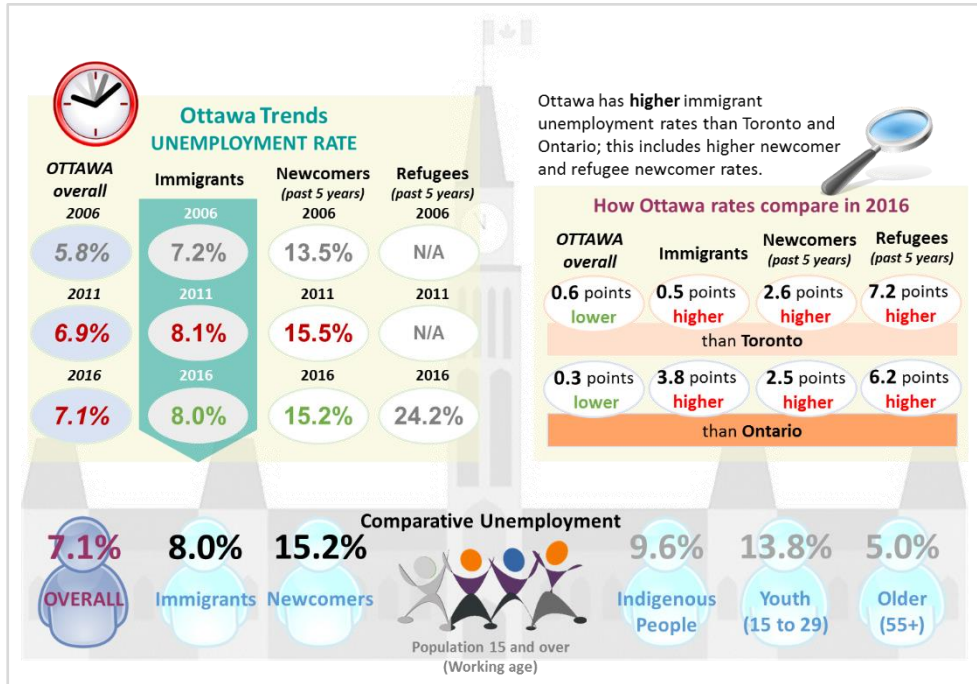
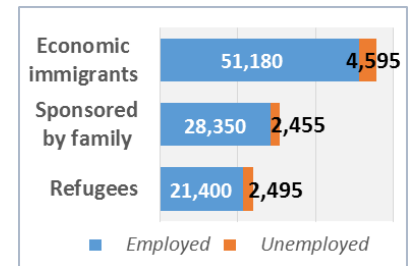


Immigrant and newcomer labour pool in Ottawa



Ottawa's immigrant labour pool of 208,695 has 132,200 participants in the labour force (a participation rate of 63.3% versus 69.4% for non-Immigrants).¹

A closer look at the Immigrant labour force in Ottawa (showing those who arrived between 1980 and 2016)²



EMPLOYMENT AND UNEMPLOYMENT

Labour force status by age, Immigrant population, Ottawa, 2016³

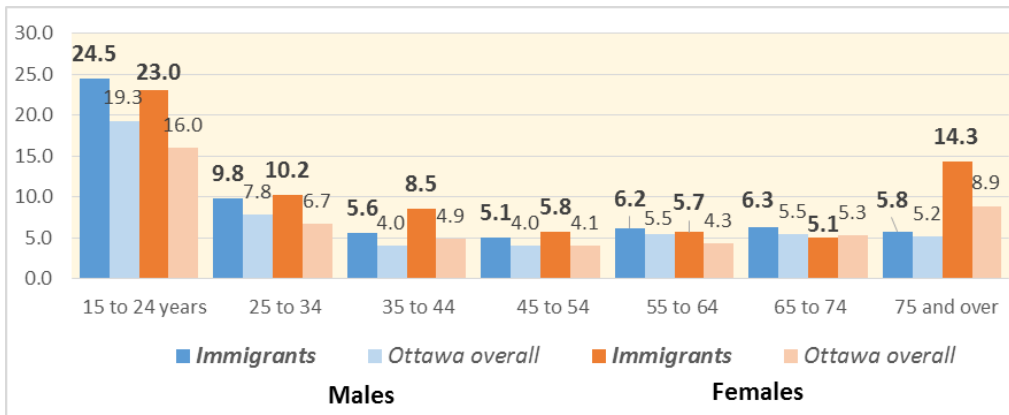
Age Group	In the labour force	Employed	Unemployed	Not in the labour force	Participation rate	Employment rate	Unemployment rate
15 to 24	9,520	7,260	2,265	8,640	52.4%	40.0%	23.8%
25 to 34	21,855	19,665	2,185	5,045	81.2%	73.1%	10.0%
35 to 44	31,335	29,110	2,230	6,005	83.9%	77.9%	7.1%
45 to 54	38,370	36,290	2,085	6,635	85.3%	80.6%	5.4%
55 to 64	23,590	22,185	1,405	10,190	69.8%	65.7%	6.0%
65 to 74	6,605	6,220	385	20,255	24.6%	23.2%	5.8%
75 and over	920	840	85	19,725	4.5%	4.1%	9.2%

Employment & training supports⁵

10,635 unemployed immigrants in Ottawa in 2016; 2,002 newcomers* were Employment Ontario clients
*EO uses the term 'newcomer' which does not include all immigrants; EO newcomer data shown below

- 1,584 in Employment Service
- 358 in Literacy and Basic Skills program
- 31 in Apprenticeship
- 29 in Second Career program

Unemployment rate by age, Immigrant population vs. Overall, Ottawa, 2016⁴



A closer look at landing periods⁶

Unemployment rates decrease for immigrants in Canada longer

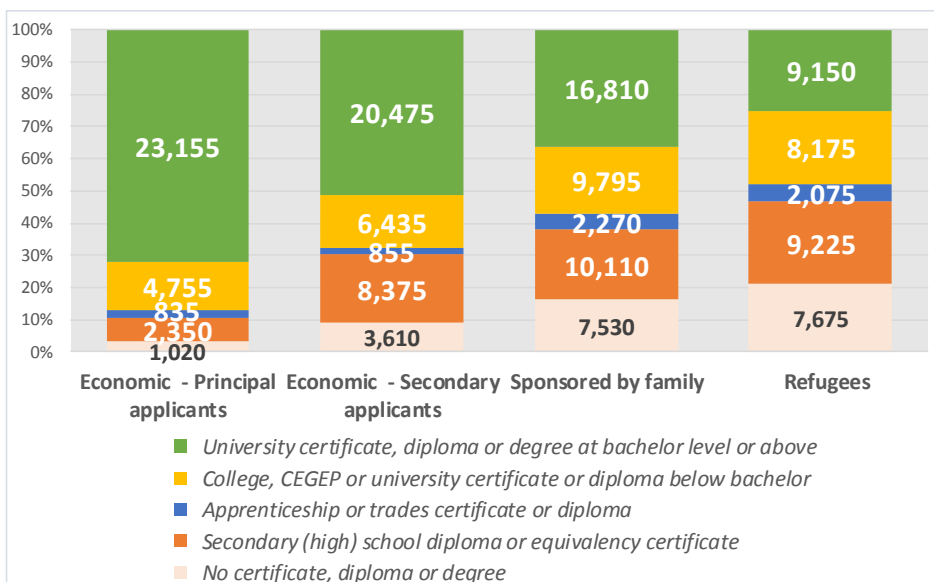
- Before 1981: 4.6%
- 1981 to 1990: 4.9%
- 1991 to 2000: 7.1%
- 2001 to 2005: 9.3%
- 2006 to 2010: 11.3%
- 2011 to 2016: 15.1%

A closer look at those with no post-secondary completion⁷

The immigrant unemployment (UE) rate is similar to that of the overall population when looking at those with no postsecondary credentials.

No Post-Secondary Completion	% of pool	UE rate
Ottawa overall	37%	11.4%
Immigrants	33%	12.6%
Economic (Primary)	10%	3.4%
Economic (Secondary)	30%	18.8%
Sponsored by Family	38%	9.5%
Refugees	47%	13.7%

EDUCATIONAL ATTAINMENT AND PROGRAMS OF STUDY



Immigrants by Program of Study⁸

Immigrants are **more** likely to have **STEM** education and **less** likely to have a **trades** completion

Immigrants	Ottawa overall
33%	No postsecondary certificate, diploma or degree 37%
22%	STEM 15%
45%	BHASE (non-STEM) 48%
7%	Trades, services, natural resources and conservation 9%

Programs of study and work status

The table below shows the # of immigrants with and without postsecondary credentials in Ottawa, as well as field of study for those with postsecondary credentials. It also looks at the percentage of those individuals working at the time of the 2016 Census and compares that to the overall Ottawa population.

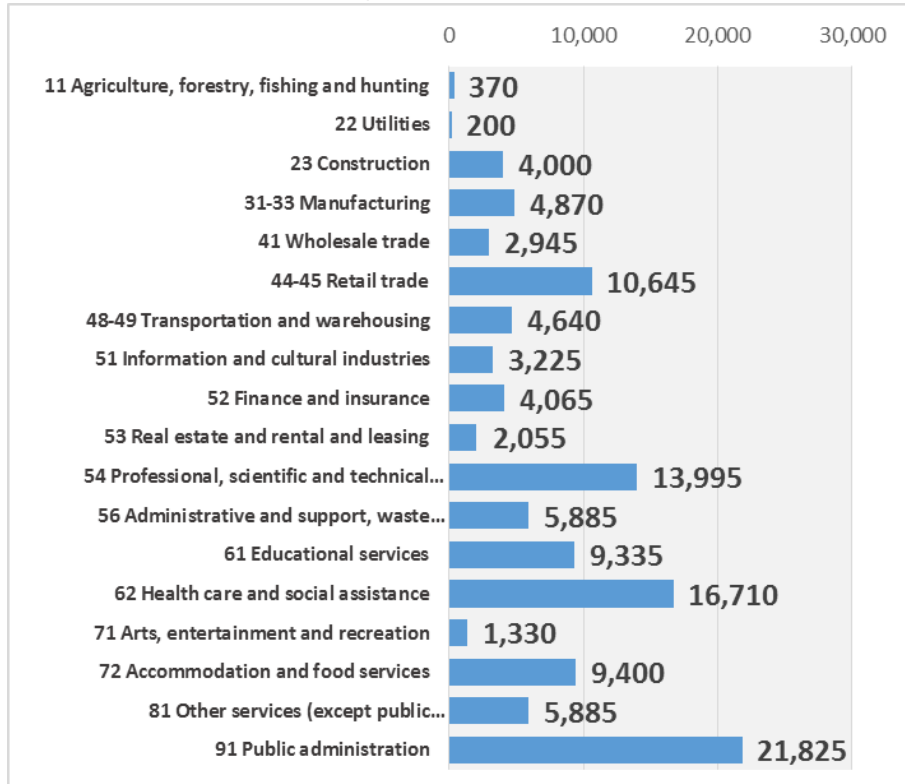
Field of study	Postsecondary educational attainment	# Employed	% Employed	
	Immigrants	Immigrants	Immigrants	Ottawa overall
Total (all levels of education)	208,695	121,565	58%	63%
<i>No postsecondary certificate, diploma or degree</i>	68,670	27,920	41%	48%
STEM	46,195	32,700	71%	73%
Science and science technology	11,600	7,290	63%	69%
Engineering and engineering technology	22,045	15,680	71%	73%
Mathematics and computer and information science	12,550	9,725	77%	78%
BHASE (non-STEM)	93,830	60,940	65%	71%
Business and administration	25,490	17,850	70%	72%
Arts and humanities	12,100	6,845	57%	67%
Social and behavioural sciences	16,380	10,950	67%	75%
Legal professions and studies	2,855	1,940	68%	77%
Health care	16,475	11,230	68%	69%
Education and teaching	6,425	3,615	56%	63%
Trades, services, natural resources and conservation	14,100	8,520	60%	71%

A closer look at gaps in % working

- For those with *trades-related* education, the employment rate of immigrants is **11 percentage points lower** than for the overall population
- The gap for those in **non-STEM**, which includes trades, was **6 points**, with the smallest gap seen in *Health care* (1%)
- The gap for those with **STEM** credentials is **2%**, with a 1% gap in *Mathematics and computer and information science*

WHERE IMMIGRANTS WORK IN OTTAWA (Industry Sectors)⁹

The chart below and table included here show the industry sectors with more than 1,000 overall jobs in Ottawa; the chart shows the # of immigrants working in the sector at the time of the 2016 Census (May 2016) and the table shows the share of immigrants in the sector.

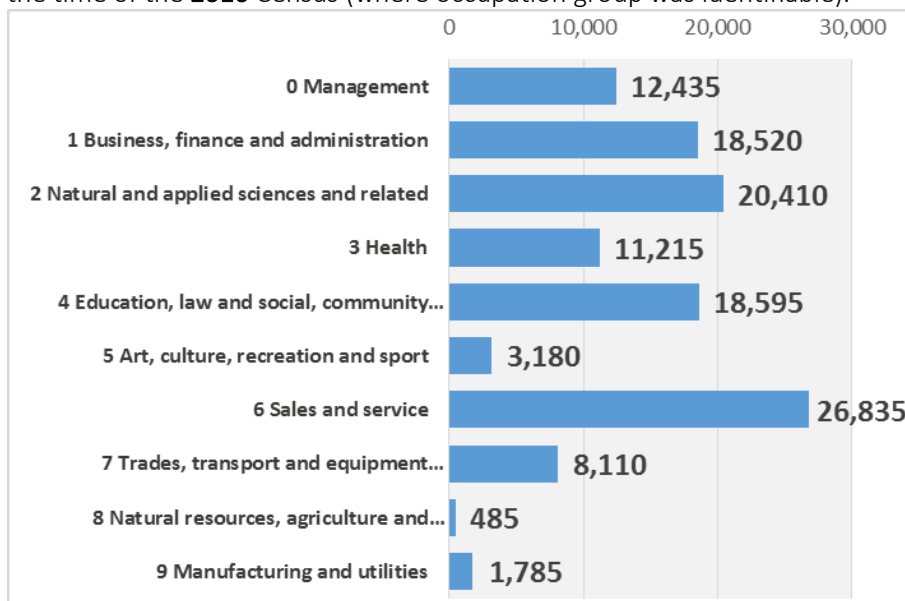


2016 Share of sector jobs (average 24%):

31%	48-49 Transportation and warehousing
30%	31-33 Manufacturing
30%	62 Health care and social assistance
29%	72 Accommodation and food services
28%	81 Other services (except public administration)
27%	54 Professional, scientific and technical services
27%	56 Administrative and support, waste management ...
24%	52 Finance and insurance
24%	41 Wholesale trade
23%	51 Information and cultural industries
23%	61 Educational services
22%	53 Real estate and rental and leasing
20%	44-45 Retail trade
20%	91 Public administration
16%	23 Construction
15%	22 Utilities
14%	71 Arts, entertainment and recreation
14%	11 Agriculture, forestry, fishing and hunting

WHAT IMMIGRANTS DO IN OTTAWA (Occupations)¹⁰

These figures show # and share of immigrant workers by occupation group at the time of the 2016 Census (where occupation group was identifiable).



2016 Share of occupation group jobs (average 24%):

36%	9 Manufacturing and utilities
33%	2 Natural and applied sciences and related
33%	3 Health occupations
25%	6 Sales and service
22%	4 Education, law and social, community and government services
21%	7 Trades, transport and equipment operators and related
20%	0 Management
20%	1 Business, finance and administration
17%	5 Art, culture, recreation and sport
11%	8 Natural resources, agriculture and related production

Skill level of intended occupation (2017)

- Of those who plan to work:
- **11%** plan to work in a **Managerial** position
- **61%** plan to work in a **Skill Level A** occupation (usually requires university education)
- **26%** plan to work in a **Skill Level B** occupation (usually requires college education or apprenticeship training)
- **2%** plan to work in a **Skill Level C** occupation (usually require secondary school and/or occupation-specific training)
- **None** plan to work in a **Skill Level D** occupation (on-the-job training is all that is required)

Occupations with the most immigrants

- *Information systems analysts and consultants* top the list with **3,625** immigrants.
- **3** of the **top 10** occupations fall in the *Sales & service* category; **3** fall in *Natural & applied sciences*.

Highest share of immigrants

- Immigrants hold **79%** of *Electronics assemblers, fabricators, inspectors & testers* jobs.
- Occupations split between **low paying** and **highly skilled**, perhaps reflecting immigration policy around refugees and skilled workers.
- Those in **bold** made both lists.

Quick Employed Workforce Facts¹¹

- **24%** use public transportation to get to work
- **10%** are self-employed
- **51%** work full year, full time
- **17%** use both English and French regularly at work
- **\$49,441** average annual income

2017 INTENDED OCCUPATIONS OF NEW PERMANENT RESIDENTS¹²

Newly admitted permanent residents that specified an intended occupation in 2017 (note that this data does not include Refugees)

TOP TEN Intended Occupations (Ottawa)	# of new permanent residents intending to work
Software engineers and designers	180
Computer programmers & interactive media developers	80
Information systems analysts and consultants	75
Electrical and electronics engineers	50
University professors and lecturers	40
Computer engineers (except software engineers and designers)	35
Electrical and electronics engineering technologists and technicians	30
User support technicians	30
Administrative assistants	25
Retail and wholesale trade managers	20

2016 IMMIGRANT EMPLOYMENT (by Occupation)¹³

Highest number of immigrants		Highest share of immigrants *occupations with 500+ overall jobs	
3,625	Information systems analysts and consultants	Electronics assemblers, fabricators, inspectors & testers	79%
3,430	Light duty cleaners	Taxi and limousine drivers and chauffeurs	72%
3,275	Nurse aides, orderlies and patient service associates	Nurse aides, orderlies and patient service associates	60%
3,270	Retail salespersons	Light duty cleaners	55%
2,965	Computer programmers and interactive media developers	Software engineers & designers	51%
2,885	Software engineers & designers	Pharmacists	51%
2,605	Food counter attendants, kitchen helpers and related support occupations	Estheticians, electrologists and related occupations	50%
2,255	Retail and wholesale trade managers	Dentists	49%
2,235	Registered nurses and registered psychiatric nurses	University professors and lecturers	46%
1,955	Administrative officers	Computer engineers (except software engineers & designers)	46%

OTHER WORKFORCE COMPARATORS OF INTEREST:

- Immigrant workers are more likely than the overall employed workforce to use **public transportation** to get to work (24% vs. 20%)
- Immigrant workers are more likely to be **self-employed** (10% vs. 8%)
- Immigrant workers are slightly less likely to **work full year, full time** (51% of employed immigrants vs. 55% of overall employed)
- Immigrant workers are less likely to regularly **use both official languages** in the workplace (17% vs. 27%)
- Immigrant workers have a lower average **annual income** (\$49,441 vs. \$52,798)

ENDNOTES

¹ Statistics Canada. 2016 Census (accessed via table 98-400-X2016286). Ottawa Census Metropolitan Area (Ontario part).

² Statistics Canada. 2016 Census (accessed via table 98-400-X2016204). Ottawa Census Metropolitan Area (Ontario part).

³ Statistics Canada. 2016 Census (accessed via table 98-400-X2016286). Ottawa Census Metropolitan Area (Ontario part).

⁴ Statistics Canada. 2016 Census (accessed via table 98-400-X2016286). Ottawa Census Metropolitan Area (Ontario part).

⁵ Statistics Canada. 2016 Census (accessed via table 98-400-X2016286). Ottawa Census Metropolitan Area (Ontario part); custom Employment Ontario data. Ottawa Census Subdivision.

⁶ Statistics Canada. 2016 Census (accessed via table 98-400-X2016286). Ottawa Census Metropolitan Area (Ontario part)

⁷ Statistics Canada. 2016 Census (accessed via table 98-400-X2016204). Ottawa Census Metropolitan Area (Ontario part).

⁸ Statistics Canada. 2016 Census (accessed via table 98-400-X2016276). Ottawa Census Metropolitan Area (Ontario part).

⁹ Statistics Canada. 2016 Census custom data. Ottawa Census Metropolitan Area (Ontario part).

¹⁰ Statistics Canada. 2016 Census custom data. Ottawa Census Metropolitan Area (Ontario part).

¹¹ Statistics Canada. 2016 Census (accessed via tables 98-400-X2016330, 98-400-X2016253, 98-400-X2016270, 98-400-X2016092, and 98-400-X2016205). Ottawa Census Metropolitan Area (Ontario part).

¹² Immigration, Refugees and Citizenship Canada (IRCC) custom data order.

¹³ Statistics Canada. 2016 Census custom data. Ottawa Census Metropolitan Area (Ontario part).