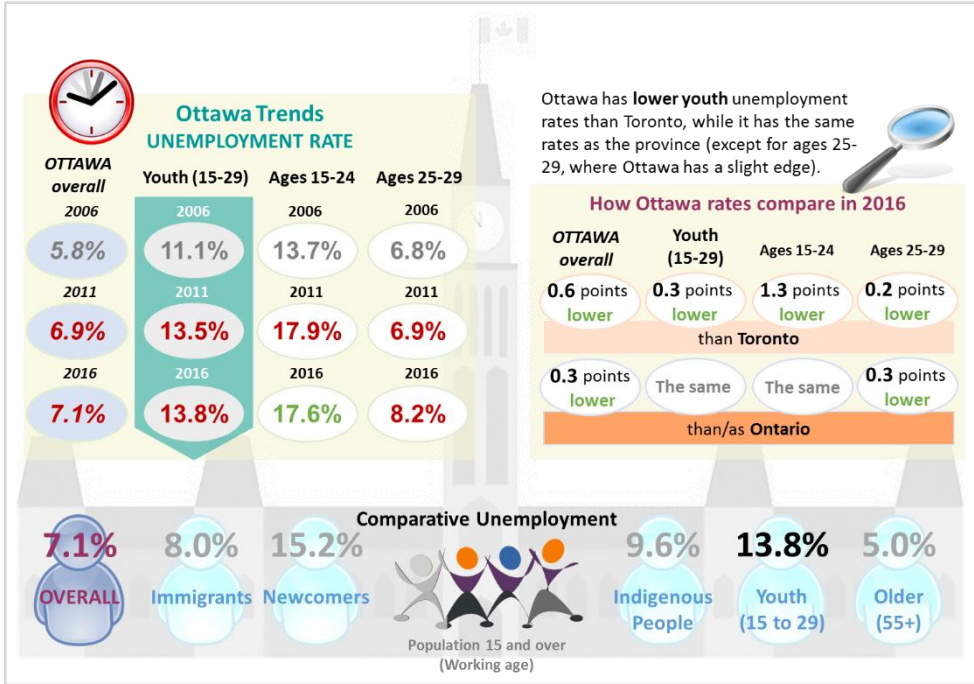


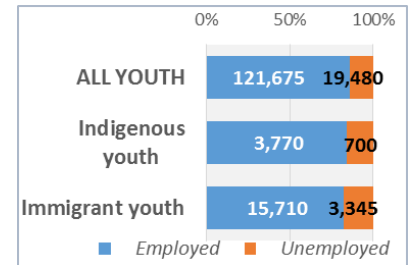
## Youth labour pool in Ottawa



Ottawa's youth labour pool of 197,550 has 141,160 participants in the labour force (a participation rate of 71.5% versus 67.6% for overall population).<sup>1</sup>

### A closer look at the Youth labour force in Ottawa<sup>2</sup>

- 13.8% unemployment rate for Ottawa youth overall
- 15.7% for Indigenous youth
- 17.6% for Immigrant youth



## EMPLOYMENT AND UNEMPLOYMENT

Labour force status by age, youth population breakdown, Ottawa, 2016<sup>3</sup>

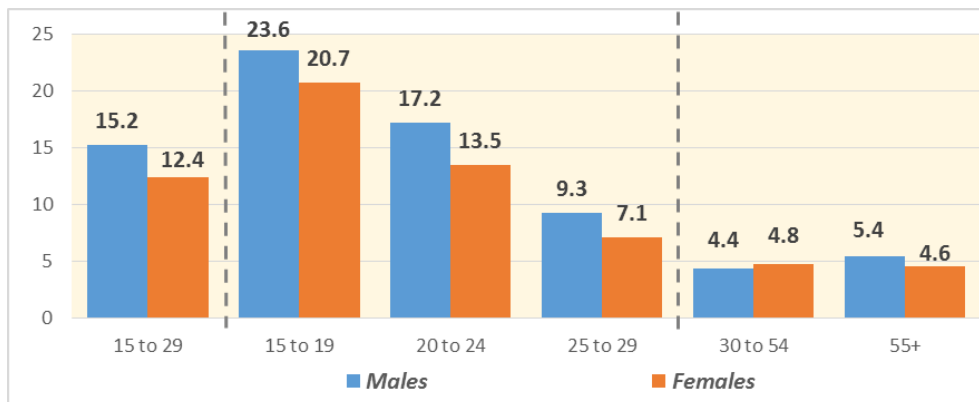
Age Group	In the labour force		Not in labour force	Participation rate	Employment rate	Unemployment rate
	Employed	Unemployed				
15 to 19	21,500	6,105	32,845	45.7%	35.6%	22.1%
20 to 24	47,575	8,665	14,810	79.2%	67.0%	15.4%
25 to 29	52,595	4,715	8,740	86.8%	79.6%	8.2%
30 to 54	286,500	13,905	40,370	88.2%	84.1%	4.6%
55+	98,820	5,255	165,220	38.6%	36.7%	5.0%

### Employment & training supports<sup>5</sup>

14,770 unemployed youth aged 15-24 in Ottawa in 2016; 3,541 Employment Ontario clients (24% of unemployed youth)

- 2,062 in Employment Service
- 650 in Literacy and Basic Skills program
- 755 in Apprenticeship
- 17 in Second Career program

Unemployment rate by age and sex, Ottawa, 2016<sup>4</sup>



### A closer look at youth unemployment by sex

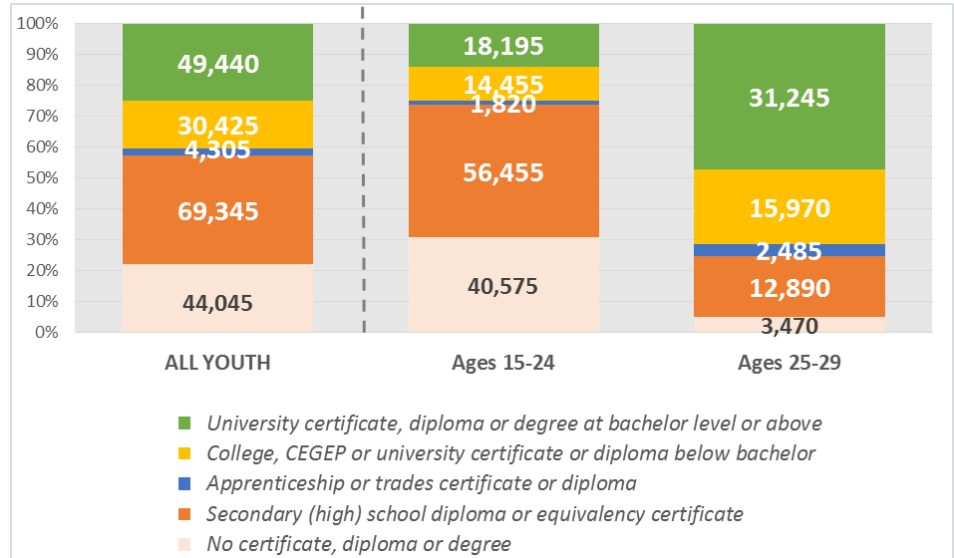
Male youths have higher rates of unemployment than female youths; males aged 15-29 have an unemployment rate 2.8 points higher than their female counterparts, while the biggest gap (3.7 points) is in the 20 to 24 category. This is in contrast to the 30 to 54 age group, where females have a higher rate.

*A closer look at older youth<sup>6</sup>*

Because many in the younger age bracket have not completed their studies, **here we focus on older youth**. This gives a sense of labour market outcomes based on educational attainment. The table below shows that the unemployment rate of 25-29 year-olds with no postsecondary completion is close to the employment rate of the overall population with no completions.

No Post-Secondary Completion	% of pool	UE rate
Ottawa overall	37%	11.4%
Ages 25 to 29	25%	11.9%

**EDUCATIONAL ATTAINMENT AND PROGRAMS OF STUDY**



*A closer look at gaps in % working*

- Looking at those with a **STEM** education, the employment rate for 20-29 year-olds is **4 percentage points higher** than it is for the overall population.
- Those aged 20-29 with a **non-STEM** education have an **11 point higher** employment rate than the overall non-STEM educated population.
- Youth 20-29 with a non-STEM education have a **higher employment rate than those with a STEM education** (note that this does not speak to whether they are employed full-time or in a field related to their studies).
- Youth 20-29 with postsecondary completion in the field of **Education** have the **highest employment rate** (91%), while those with **Physical and life sciences and technologies** credentials have the **lowest employment rate** (67%).

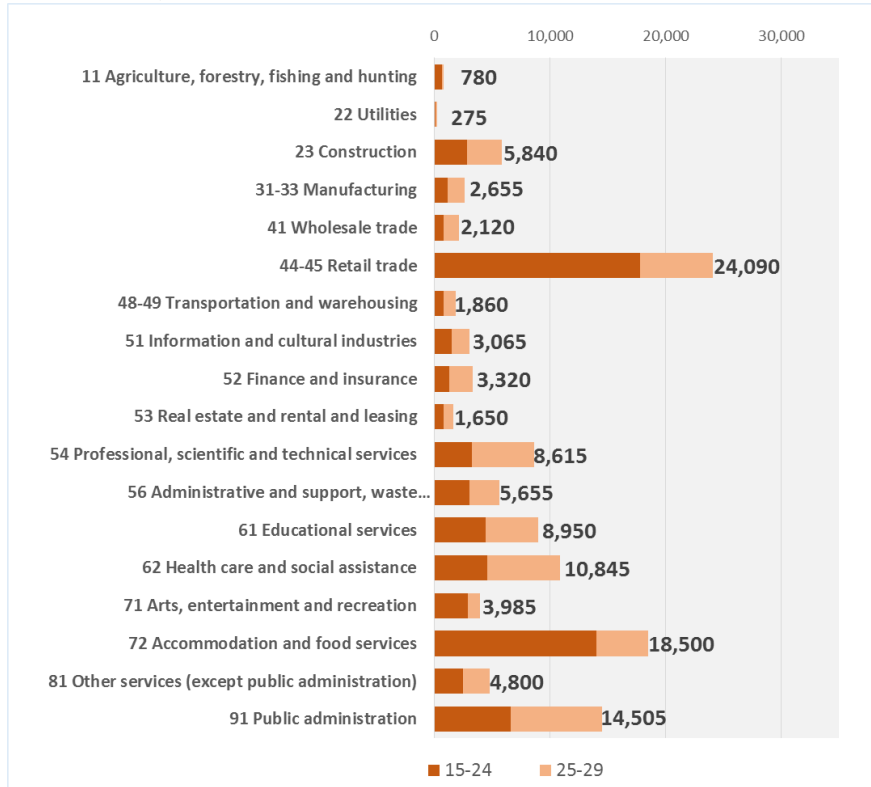
*Programs of study and work status<sup>7</sup>*

The table below shows the # of those aged 20-29 with/without postsecondary credentials in Ottawa, as well as field of study for those with postsecondary credentials. It also looks at the % of those individuals working at the time of the 2016 Census and compares that to the overall Ottawa population.

Field of study	Postsecondary educational attainment	# Employed	% Employed	
	Ages 20-29	Ages 20-29	Ages 20-29	Ottawa overall
<b>Total (all levels of education)</b>	137,100	100,175	73%	63%
<i>No postsecondary certificate, diploma or degree</i>	54,565	33,935	62%	48%
<b>STEM</b>	20,335	15,535	76%	72%
Physical and life sciences and technologies	4,970	3,330	67%	68%
Mathematics, computer and information sciences	3,465	2,645	76%	76%
Architecture, engineering, and related technologies	11,900	9,560	80%	72%
<b>Non-STEM</b>	62,175	50,705	82%	71%
Education	2,340	2,120	91%	63%
Visual and performing arts, and communications technologies	4,640	3,705	80%	73%
Humanities	4,925	3,755	76%	64%
Social and behavioural sciences and law	19,295	15,785	82%	76%
Business, management and public administration	13,985	11,650	83%	73%
Agriculture, natural resources and conservation	1,255	1,050	84%	73%
Health and related fields	10,805	8,410	78%	70%
Personal, protective and transportation services	4,930	4,230	86%	73%

### WHERE YOUTH WORK IN OTTAWA (Industry Sectors)<sup>8</sup>

The chart below and table included here show the industry sectors with more than 1,000 jobs in Ottawa; the chart shows the # of youth working in the sector (of those employed at the time of the 2016 Census) and the table shows the share of youth in the sector.

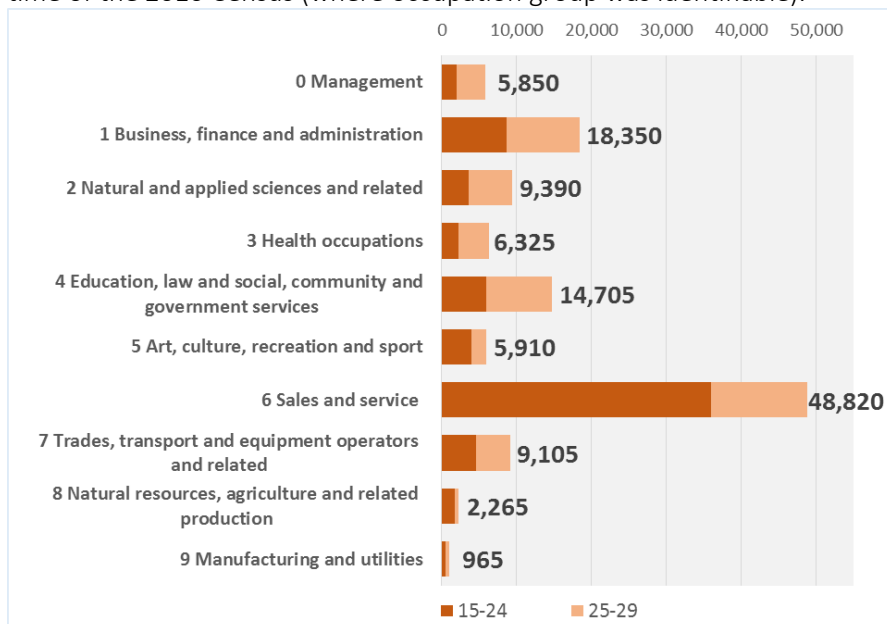


*YOUTH (ages 15-29) Share of sector jobs (average 24%):*

<b>57%</b>	72 Accommodation and food services
<b>46%</b>	44-45 Retail trade
<b>42%</b>	71 Arts, entertainment and recreation
<b>29%</b>	11 Agriculture, forestry, fishing and hunting
<b>26%</b>	56 Administrative and support, waste management and remediation services
<b>24%</b>	23 Construction
<b>23%</b>	81 Other services (except public administration)
<b>22%</b>	51 Information and cultural industries
<b>22%</b>	61 Educational services
<b>20%</b>	22 Utilities
<b>20%</b>	52 Finance and insurance
<b>19%</b>	62 Health care and social assistance
<b>18%</b>	53 Real estate and rental and leasing
<b>17%</b>	41 Wholesale trade
<b>17%</b>	54 Professional, scientific and technical services
<b>16%</b>	31-33 Manufacturing
<b>13%</b>	91 Public administration
<b>12%</b>	48-49 Transportation and warehousing

### WHAT YOUTH DO IN OTTAWA (Occupations)<sup>9</sup>

These figures show # and share of youth workers by occupation group at the time of the 2016 Census (where occupation group was identifiable).



*YOUTH (ages 15-29) Share of occupation group jobs (average 24%):*

<b>51%</b>	8 Natural resources, agriculture and related production
<b>46%</b>	6 Sales and service
<b>32%</b>	5 Art, culture, recreation and sport
<b>23%</b>	7 Trades, transport and equipment operators and related
<b>20%</b>	1 Business, finance and administration
<b>19%</b>	9 Manufacturing and utilities
<b>19%</b>	3 Health
<b>18%</b>	4 Education, law and social, community and government services
<b>15%</b>	2 Natural and applied sciences and related
<b>9%</b>	0 Management

2016 YOUTH EMPLOYMENT (by Occupation)<sup>11</sup>*Highest number of youth 15-24**Highest share of youth 15-24\**

7,740	<u>Retail salespersons</u>	Maîtres d'hôtel and hosts/hostesses	<b>89%</b>
5,730	<b>Food counter attendants, kitchen helpers and related support occupations</b>	Sports officials and referees	<b>75%</b>
5,405	Cashiers	Logging and forestry labourers	<b>74%</b>
3,035	<b>Food and beverage servers</b>	Operators and attendants in amusement, recreation & sport	<b>66%</b>
2,375	<b>Program leaders and instructors in recreation, sport and fitness</b>	Cashiers	<b>63%</b>
2,000	Store shelf stockers, clerks and order fillers	Service station attendants	<b>61%</b>
1,890	<u>Cooks</u>	<b>Program leaders and instructors in recreation, sport and fitness</b>	<b>60%</b>
1,335	<u>Other customer and information services representatives</u>	<b>Food counter attendants, kitchen helpers and related support occupations</b>	<b>59%</b>
1,270	General office support workers	Tour and travel guides	<b>55%</b>
1,155	Receptionists	<b>Food and beverage servers</b>	<b>53%</b>

*Highest number of youth 25-29**Highest share of youth 25-29*

2,000	<u>Retail salespersons</u>	Electrical power line and cable workers	<b>32%</b>
1,120	Retail and wholesale trade managers	Post-secondary teaching and research assistants	<b>29%</b>
1,060	Elementary school and kindergarten teachers	Bartenders	<b>29%</b>
1,055	Computer programmers and interactive media developers	Animal health technologists and veterinary technicians	<b>24%</b>
1,045	Registered nurses and registered psychiatric nurses	Hotel front desk clerks	<b>24%</b>
1,025	<b>Food and beverage servers</b>	Civil engineering technologists and technicians	<b>23%</b>
995	<b>Food counter attendants, kitchen helpers and related</b>	Gas fitters	<b>22%</b>
940	Other customer & information services representatives	Logging and forestry labourers	<b>22%</b>
875	Post-secondary teaching and research assistants	Process control and machine operators, food and beverage processing	<b>22%</b>
855	<u>Cooks</u>	Personnel clerks	<b>21%</b>

**OTHER WORKFORCE COMPARATORS OF INTEREST:**

- Employed youth aged 15-24 are more likely than the overall employed workforce to use **public transportation** to get to work (31% vs. 20%)
- Youth 15-24 are less likely to be **self-employed** (2% vs. 8%)
- Youth 15-24 are much less likely to **work full year, full time** (16% of employed youth vs. 55% of overall employed)
- Employed youth 15-24 are slightly less likely to regularly **use both official languages** in the workplace (25% vs. 27%)
- Youth 15-24 have lower average **annual income** (\$13,322 vs. \$52,798)

**Occupations with the most youth 15-24**

- Retail salespersons top the list with **7,740** workers aged 15-24.
- **Seven of the top ten** occupations fall in the *Sales and Service* occupation category.

**Highest share of youth 15-24\***

\*looks at occupations with over 100 jobs

- Youth 15-24 hold **89%** of *Maîtres d'hôtel and hosts/hostesses* jobs.
- As in the top jobs by # category, **seven of the top ten** occupations fall in the *Sales and Service* occupation category.
- Those in **bold** made both the top 10 by # and top 10 by share lists.
- Those underlined made both the 15-24 and 25-29 top 10 by # list

**Occupations with the most youth 25-29**

- Retail salespersons top the 25-29 list also, with **2,000** workers.
- **Five of the top ten** occupations in the *Sales and Service* occupation category, but there are more skilled/management occupations than in the 15-24 group.

**Highest share of youth 25-29\***

\*looks at occupations with over 100 jobs

- Youth 25-29 hold **32%** of *Electrical power line and cable workers* jobs.
- Occupations fall across diverse occupational categories; no occupations have a majority of workers in the 25-29 category.
- *No occupations made both the top 10 by # and top 10 by share lists.*

**Quick Employed Workforce Facts (15-24)**<sup>10</sup>

- **31%** use public transportation to get to work
- **2%** are self-employed
- **16%** work full year, full time
- **25%** use both English and French regularly at work
- **\$13,322** average annual income

## ENDNOTES

---

<sup>1</sup> Statistics Canada. 2016 Census (accessed via table 98-400-X2016287). Ottawa Census Metropolitan Area (Ontario part).

<sup>2</sup> Statistics Canada. 2016 Census (accessed via tables 98-400-X2016287 and 98-400-X2016286). Ottawa Census Metropolitan Area (Ontario part).

<sup>3</sup> Statistics Canada. 2016 Census (accessed via table 98-400-X2016286). Ottawa Census Metropolitan Area (Ontario part).

<sup>4</sup> Statistics Canada. 2016 Census (accessed via table 98-400-X2016287). Ottawa Census Metropolitan Area (Ontario part).

<sup>5</sup> Statistics Canada. 2016 Census (accessed via table 98-400-X2016286). Ottawa Census Metropolitan Area (Ontario part); custom Employment Ontario data. Ottawa Census Subdivision.

<sup>6</sup> Statistics Canada. 2016 Census (accessed via table 98-400-X2016287). Ottawa Census Metropolitan Area (Ontario part).

<sup>7</sup> Statistics Canada. 2016 Census (accessed via table 98-400-X2016285). Ottawa Census Metropolitan Area (Ontario part).

<sup>8</sup> Statistics Canada. 2016 Census (accessed via table 98-400-X2016290). Ottawa Census Metropolitan Area (Ontario part).

<sup>9</sup> Statistics Canada. 2016 Census (accessed via table 98-400-X2016295). Ottawa Census Metropolitan Area (Ontario part).

<sup>10</sup> Statistics Canada. 2016 Census (accessed via tables 98-400-X2016332, 98-400-X2016253, 98-400-X2016270, 98-400-X2016092 and 98-400-X2016205). Ottawa Census Metropolitan Area (Ontario part).

<sup>11</sup> Statistics Canada. 2016 Census (accessed via table 98-400-X2016295). Ottawa Census Metropolitan Area (Ontario part).