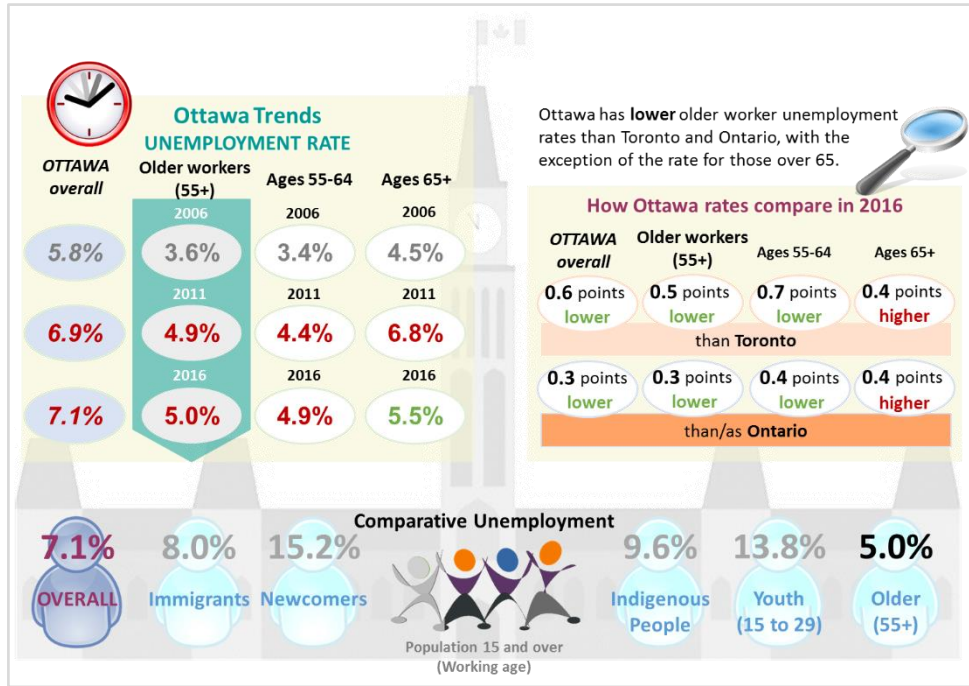
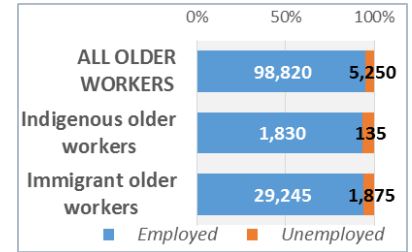


Older labour pool in Ottawa



Ottawa's older labour pool of 269,290 has 104,075 participants in the labour force (a participation rate of 38.6% versus 67.6% for overall population).¹

A closer look at the older worker (55+) labour force in Ottawa²

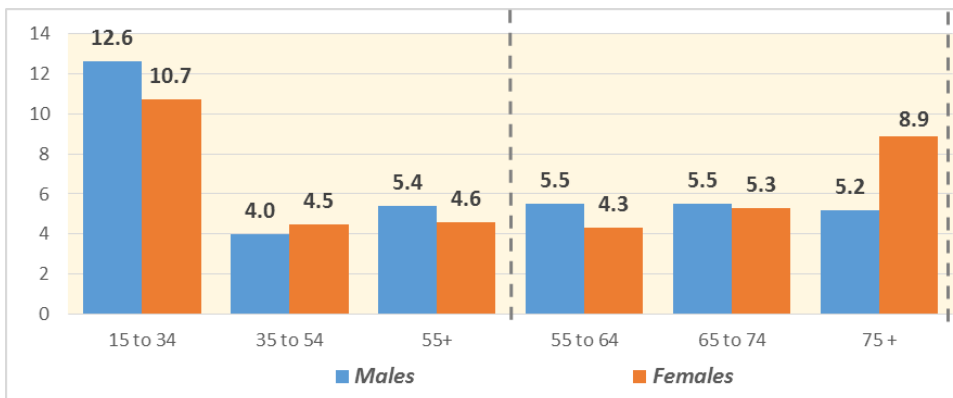


EMPLOYMENT AND UNEMPLOYMENT

Labour force status by age, older population breakdown, Ottawa, 2016³

Age Group	In the labour force		Not in labour force	Participation rate	Employment rate	Unemployment rate
	Employed	Unemployed				
15 to 34	198,500	23,095	63,645	75.7%	66.9%	11.6%
35 to 54	243,065	10,290	33,125	88.0%	84.3%	4.2%
55 to 64	82,780	4,075	46,225	64.2%	61.0%	4.9%
65 to 74	18,745	1,010	67,085	21.8%	20.7%	5.4%
75 +	2,550	165	51,910	4.7%	4.4%	6.5%

Unemployment rate by age and sex, Ottawa, 2016⁴



Employment & training supports⁵

1,175 unemployed older workers (aged 65 and over) in Ottawa in 2016; 185 were Employment Ontario clients (15.7% of unemployed older workers)

- 129 in Employment Service
- 36 in Literacy and Basic Skills program
- 20 Canada Ontario Job Grant participants

A closer look at older worker unemployment by sex

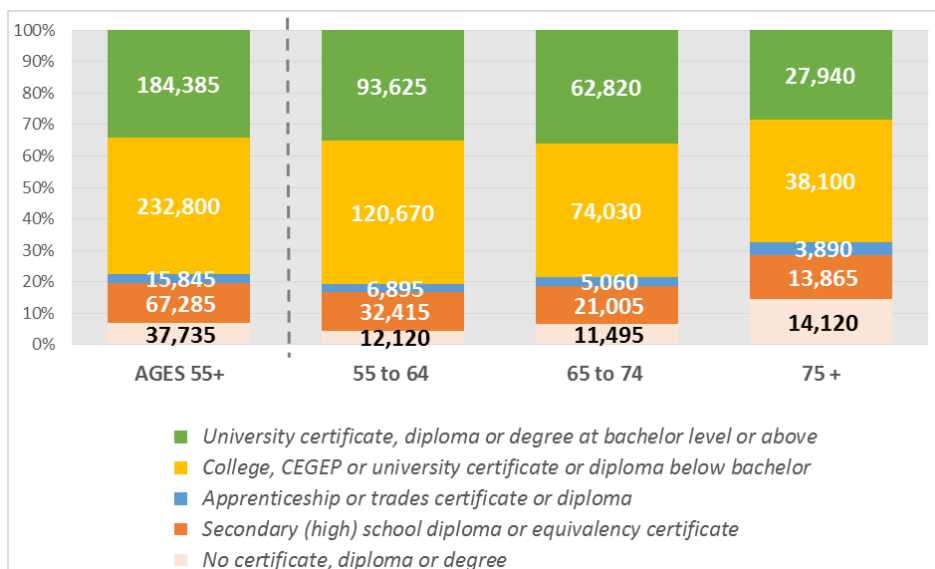
Male older workers have higher rates of unemployment than female older workers; males aged 55-64 have an unemployment rate 1.2 points higher than their female counterparts. This contrasts with the 75+ age group, where females have a 3.7 points higher rate than males.

EDUCATIONAL ATTAINMENT AND PROGRAMS OF STUDY

A closer look at those aged 55+⁶

When looking at those with **no postsecondary credentials**, the population over 55 has a notably lower unemployment rate than the overall population (6 points lower).

No Post-Secondary Completion	% of pool	UE rate
Ottawa overall	37%	11.4%
Older workers (55+)	39%	5.4%
55-64	35%	5.3%
65-74	38%	5.3%
75+	51%	10.0%



A closer look at gaps in % working

Note that lower employment rates for the older workforce are largely reflective of the large portion of this population that has retired.

- Looking at those with a **STEM** education, the employment rate for 55+ year-olds is **26 percentage points lower** than it is for the overall population.
- Those aged 55+ with a **non-STEM** education have a **30 point lower** employment rate than the overall non-STEM educated population.
- Older workers 55+ with a non-STEM education have a similar employment rate to those with a STEM education** (note that this does not speak to whether they are employed full-time or in a field related to their studies).
- Older workers 55+ with postsecondary completion in the field of **Mathematics, computer and information sciences** have the **highest employment rate** (47%), while those with **Education** credentials have the **lowest employment rate** (29%).

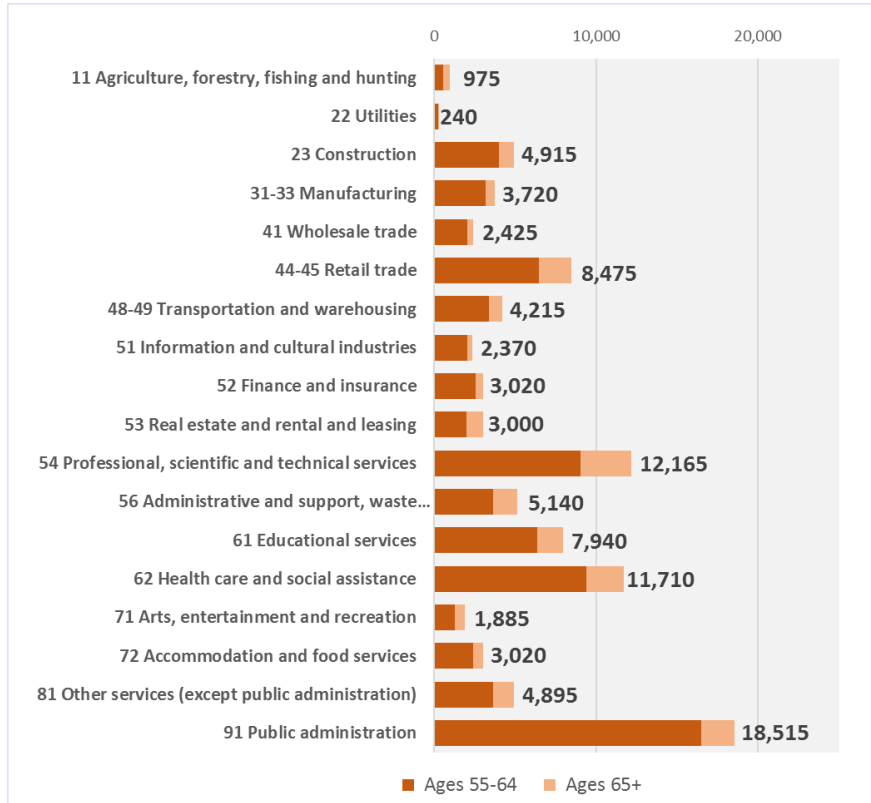
Programs of study and work status⁷

The table below shows the # of those aged 55+ with/without postsecondary credentials in Ottawa, as well as field of study for those with postsecondary credentials. It also looks at the % of those individuals working at the time of the 2016 Census and compares that to the overall Ottawa population.

Field of study	Postsecondary educational attainment	# Employed	% Employed	
	Ages 55+	Ages 55+	Ages 55+	Ottawa overall
Total (all levels of education)	269,295	98,820	37%	63%
<i>No postsecondary certificate, diploma or degree</i>	105,025	29,745	28%	48%
STEM	47,840	21,405	45%	72%
Physical and life sciences and technologies	8,850	3,560	40%	68%
Mathematics, computer and information sciences	9,420	4,450	47%	76%
Architecture, engineering, and related technologies	29,570	13,395	45%	72%
Non-STEM	116,425	47,665	41%	71%
Education	12,695	3,655	29%	63%
Visual and performing arts, and communications technologies	4,640	2,095	45%	73%
Humanities	13,765	4,965	36%	64%
Social and behavioural sciences and law	23,465	10,640	45%	76%
Business, management and public administration	32,345	13,945	43%	73%
Agriculture, natural resources and conservation	2,505	1,150	46%	73%
Health and related fields	21,070	8,720	41%	70%
Personal, protective and transportation services	5,940	2,495	42%	73%

WHERE OLDER WORKERS WORK IN OTTAWA (Industry Sectors)⁸

The chart below and table included here show the industry sectors with more than 1,000 jobs in Ottawa; the chart shows the # of older workers working in the sector (of those employed at the time of the 2016 Census) and the table shows the share of older workers in the sector.

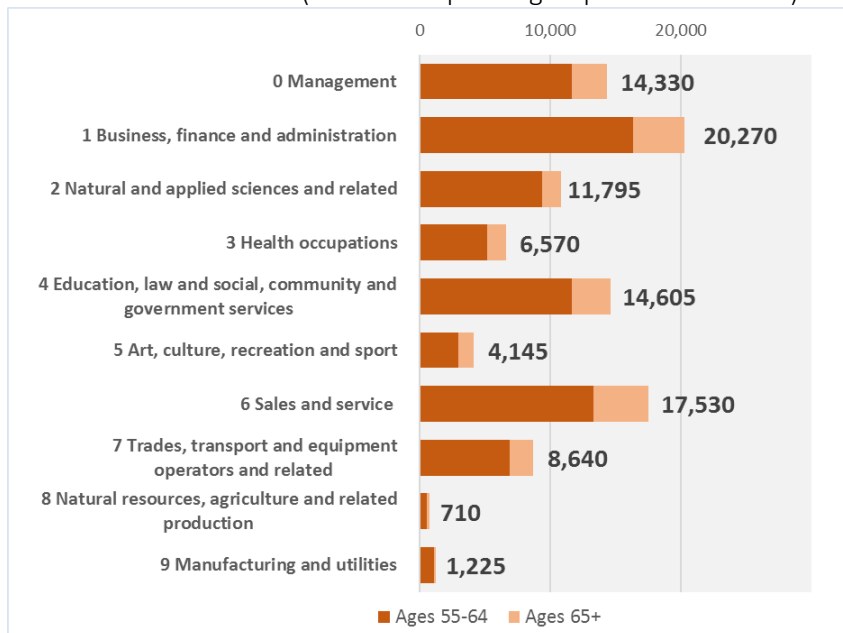


OLDER WORKERS (ages 55+) Share of sector jobs (average 19%):

36%	11 Agriculture, forestry, fishing and hunting
32%	53 Real estate and rental and leasing
28%	48-49 Transportation and warehousing
24%	56 Administrative and support, waste management and remediation services
24%	54 Professional, scientific and technical services
23%	81 Other services (except public administration)
23%	31-33 Manufacturing
21%	62 Health care and social assistance
20%	23 Construction
20%	71 Arts, entertainment and recreation
20%	41 Wholesale trade
19%	61 Educational services
18%	52 Finance and insurance
18%	22 Utilities
17%	51 Information and cultural industries
17%	91 Public administration
16%	44-45 Retail trade
9%	72 Accommodation and food services

WHAT OLDER WORKERS DO IN OTTAWA (Occupations)⁹

These figures show # and share of older workers by occupation group at the time of the 2016 Census (where occupation group was identifiable).



OLDER WORKERS (ages 55+) Share of occupation group jobs (average 19%):

25%	9 Manufacturing and utilities
23%	0 Management
22%	5 Art, culture, recreation and sport
22%	7 Trades, transport and equipment operators and related
22%	1 Business, finance and administration
19%	3 Health
18%	4 Education, law and social, community and government services
17%	2 Natural and applied sciences and related
17%	6 Sales and service
16%	8 Natural resources, agriculture and related production

2016 OLDER WORKERS EMPLOYMENT (by Occupation)¹¹

Highest number of older workers 55-64 Highest share of older workers 55-64

2,135	Administrative officers	Judges	47%
2,135	<u>Retail salespersons</u>	Practitioners of natural healing	44%
2,030	Information systems analysts and consultants	Aircraft instrument, electrical and avionics mechanics, technicians and inspectors	41%
1,570	<u>Retail and wholesale trade managers</u>	Binding and finishing machine operators	41%
1,460	General office support workers	Appliance servicers and repairers	36%
1,420	<u>Registered nurses and registered psychiatric nurses</u>	Tailors, dressmakers, furriers and milliners	35%
1,355	Administrative assistants	Industrial sewing machine operators	35%
1,345	Light duty cleaners	Land surveyors	33%
1,200	<u>Janitors, caretakers and building superintendents</u>	Senior managers - health, education, social and community services and membership organizations	33%
1,190	Financial auditors and accountants	Plateless printing equipment operators	32%

Highest number of older workers 65+ Highest share of older workers 65+

745	<u>Retail salespersons</u>	Judges	33%
495	Security guards and related security service occupations	Managers in agriculture	24%
435	<u>Retail and wholesale trade managers</u>	Conductors, composers and arrangers	19%
425	Light duty cleaners	Other religious occupations	18%
420	Real estate agents and salespersons	Real estate agents and salespersons	17%
345	Bus drivers, subway operators and other transit operators	Tailors, dressmakers, furriers and milliners	16%
335	<u>Registered nurses and registered psychiatric nurses</u>	Translators, terminologists and interpreters	15%
335	Lawyers and Quebec notaries	Painters, sculptors and other visual artists	15%
330	<u>Janitors, caretakers and building superintendents</u>	Supervisors, motor transport and other ground transit operators	13%
320	Administrative officers	Industrial sewing machine operators	13%

OTHER WORKFORCE COMPARATORS OF INTEREST:

- Older workers 65+ are less likely than the overall employed workforce to use **public transportation** to get to work (14% vs. 20%)
- Older workers 65+ are more likely to be **self-employed** (25% vs. 8%)
- Older workers 65+ are less likely to **work full year, full time** (32% of employed older workers vs. 55% of overall employed)
- Older workers 65+ are less likely to regularly **use both official languages** in the workplace (20% vs. 27%)
- Older workers 65-74 and 75+ have a lower average **annual income** (\$33,300 and \$17,986 vs. \$52,798 for overall workforce)

Occupations with the most older workers 55-64

- *Administrative officers* and *Retail salespersons* top the list with **2,125** workers aged 55-64.
- **Four of the top ten** occupations fall in the *Business, finance and administration occupations* occupation category.

Highest share of older workers 55-64*

*looks at occupations with over 100 jobs

- Older workers 55-64 hold **47%** of *Judges* jobs.
- **Three of the top ten** share of occupations fall in the *manufacturing and utilities* occupation category.
- Those underlined made both the 55-64 and 65+ top 10 by # list.

Occupations with the most older workers 65+

- *Retail salespersons* top the older workers 65+ list also, with **745** workers.
- **Five of the top ten** occupations in the *Sales and Service* occupation category.

Highest share of older workers 65+*

*looks at occupations with over 100 jobs

- Older workers 65+ hold **33%** of *Judges* jobs.
- Occupations fall across diverse occupational categories; no occupations have a majority of workers in the 65+ category.
- Those in **bold** made both the top 10 by # and top 10 by share lists.

Quick Employed Workforce Facts (65+) ¹⁰

- **14%** use public transportation to get to work
- **25%** are self-employed
- **32%** work full year, full time
- **20%** use both English and French regularly at work
- **\$33,300** and **\$17,986** average annual income (ages 65-74 and 75+)

ENDNOTES

¹ Statistics Canada. 2016 Census (accessed via table 98-400-X2016287). Ottawa Census Metropolitan Area (Ontario part).

² Statistics Canada. 2016 Census (accessed via tables 98-400-X2016287 and 98-400-X2016286). Ottawa Census Metropolitan Area (Ontario part).

³ Statistics Canada. 2016 Census (accessed via table 98-400-X2016286). Ottawa Census Metropolitan Area (Ontario part).

⁴ Statistics Canada. 2016 Census (accessed via table 98-400-X2016287). Ottawa Census Metropolitan Area (Ontario part).

⁵ Statistics Canada. 2016 Census (accessed via table 98-400-X2016286). Ottawa Census Metropolitan Area (Ontario part); custom Employment Ontario data. Ottawa Census Subdivision.

⁶ Statistics Canada. 2016 Census (accessed via table 98-400-X2016287). Ottawa Census Metropolitan Area (Ontario part).

⁷ Statistics Canada. 2016 Census (accessed via table 98-400-X2016285). Ottawa Census Metropolitan Area (Ontario part).

⁸ Statistics Canada. 2016 Census (accessed via table 98-400-X2016290). Ottawa Census Metropolitan Area (Ontario part).

⁹ Statistics Canada. 2016 Census (accessed via table 98-400-X2016295). Ottawa Census Metropolitan Area (Ontario part).

¹⁰ Statistics Canada. 2016 Census (accessed via tables 98-400-X2016332, 98-400-X2016253, 98-400-X2016270, 98-400-X2016092, and 98-400-X2016205). Ottawa Census Metropolitan Area (Ontario part).

¹¹ Statistics Canada. 2016 Census (accessed via table 98-400-X2016295). Ottawa Census Metropolitan Area (Ontario part).